

PART OF THE SE.1/4, OF SECTION 36, T.7N., R.2W., S.L.B. & M.

468

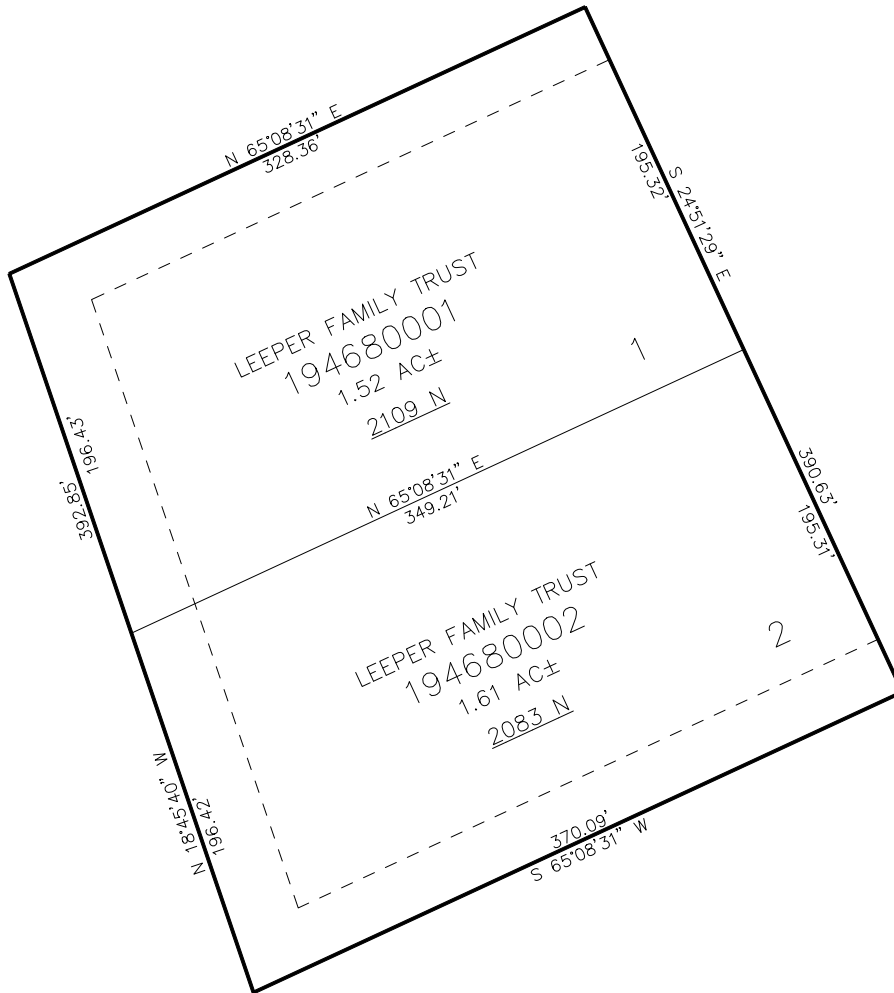
JNL BUSINESS PARK

IN WEBER COUNTY

TAXING UNIT: 17

SCALE 1" = 50'

SEE PAGE 65



SEE PAGE 65

SEE PAGE 65

SEE PAGE 65

10' UTILITY & DRAINAGE EASEMENTS EACH
SIDE OF PROPERTY LINES AS INDICATED
BY DASHED LINES EXCEPT AS OTHERWISE
SHOWN.

FOR COMPLETE SURVEY DATA SEE
ORIGINAL DEDICATION PLAT IN
BOOK 95, PAGE 54 OF RECORDS.